



# IMPORTANT

*Please read before installation*

## PROTECT YOUR TROUGH AND SECURE YOUR VALVE

# Murphy



**Concrete Products Ltd.**

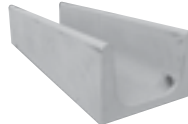
LEADING IRISH MANUFACTURER  
OF PRE-CAST PRODUCTS

## PRECAST POWER



Solving Problems by Building Solutions

**IRISH PRODUCTS, DESIGNED AND PRODUCED IN IRELAND**



- Renewable/Environmental Construction
- Agriculture • Bespoke Precast



(+353) 53 9256026



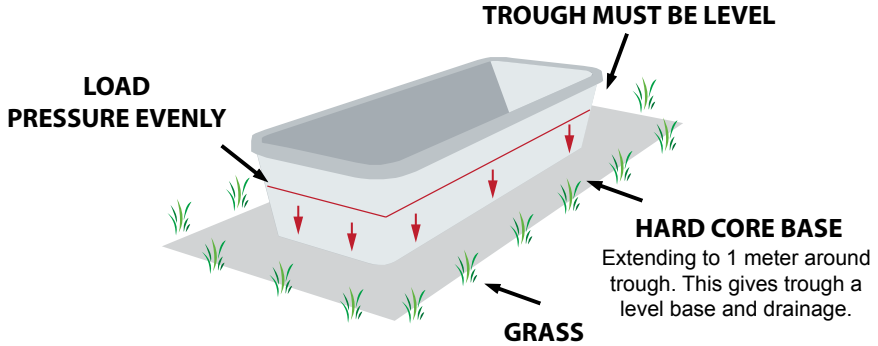
info@murphyconcreteproducts.ie

[www.murphyconcreteproducts.ie](http://www.murphyconcreteproducts.ie)



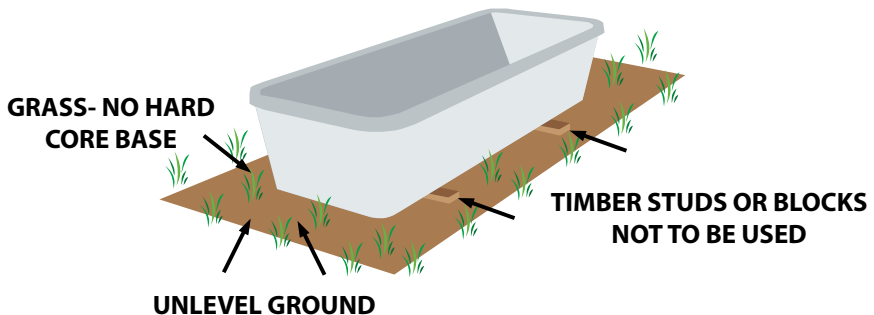
## CORRECT WAY TO FIT YOUR TROUGH

*To safeguard long-term quality of your trough, it is recommended that you place your trough on level ground.*



## INCORRECT WAY TO FIT YOUR TROUGH

*Do not place your quality trough on skids/ timbers. This may lead it to split and be damaged over time.*



# HANSEN

## Super-Flo Valves

### Frequently Asked Questions

**Will a higher flow cost me more to run my pump?**

No, because the Hansen valve is more efficient than what you are used to. The reduced operating pressure required will equate to higher flows at lower pressures at your pump which in turn will reduce pumping time and cost.

**At present I get valve bounce in my troughs, will your valve stop this?**

Yes, valve bounce is created from high flows at high pressures, because the Hansen valve delivers higher flows than other valves it will effectively reduce line pressure which in return will reduce the incidences of this problem also reducing water hammer.

**I have problems with having to forever clean my valves as my water supply can get dirty at times, how will the valve handle these conditions?**

The Hansen valve is designed to work in either clean or dirty water situations.

**What pressure can I run my valve at?**

The Hansen valve will operate from 0bar to 12bar.

**How can I trouble shoot any valve problem?**

Simply refer to the trouble shooting notes included here and the associated checklist.

**If I need to replace a valve, is there a cost?**

Yes, there is a cost for a replacement valve. The valves are Hansen valves and are bought in from New Zealand and as such, there is an associated cost which will include delivery directly to you. You can also order these online at our site [www.murphyconcreteproducts.ie](http://www.murphyconcreteproducts.ie) This ensures that you can order quickly and easily, you will receive the correct valve for your trough, there is minimum down time with the trough and it is delivered straight to your door.



For further information visit [www.hansenproducts.co.nz](http://www.hansenproducts.co.nz)

# Murphy

Concrete Products Ltd.



How to get the most out of your valve by checking the following points

## Trouble Shoot Your Valve

- Check all fittings are tight and have no leaks.
- Check water pressure and the flow of water coming into the valve.
- Raise the ball float until the water stops coming out of the outlet of the valve.
- If water continues to leak from the outlet of the valve do the following steps.

## Valve Checklist

1. Remove the large nut where the water comes from the valve.
2. Remove the large flat rubber seal and check the rubber for any damage, if damaged turn over the rubber and place back into position.
3. Check inside of the valve for any grit or dirt.
4. Move arm up and down if the arm has resistance remove the plunger from the main cylinder and check the rubber O ring on the plunger, also check inside the cylinder that it is smooth.
5. Before reassemble place some vaseline into the cylinder.
6. Reassemble all parts and move the arm up and down several times.